

West Walker Primary School: SEND Information Report 2025-26

West Walker Primary is an inclusive school in the East End of Newcastle.

The Special Educational Needs (SEN) and Disabilities Team consists of:

SEND Co-ordinator (SENDCo) - Mrs M Scorgie.

SEND Teaching Assistant (SENTA) – Mrs K English

SEND Governor – Mr Peter Carter

School interventions are monitored by the SENDCo and delivered by the SENTA, Teaching Assistants and Teachers.

We realise that any child may have one distinct area of need or several areas of need. Therefore we provide a personalised SEN Support Plan for each child to successfully meet their needs.

Areas of Need	Associated Difficulties	Interventions	Outside agency involvement.
Communication and Interaction	Speech, language and communication needs. Autism spectrum disorder (ASD)	Early Talk Boost Communication and processing Social interaction	Speech Language Therapy (SLT) Specific Language Impairment Team (SLI Team) Education Psychology (EP) Special Educational Needs Advice and Support Allocation Panel (SEN ASAP) Children and Young Person's Services (CYPS)
Cognition and Learning	Moderate learning difficulties (MLD) Severe learning difficulties (SLD) Profound and multiple learning difficulties (PMLD) Specific learning difficulties (SpLD) such as dyslexia, dyscalculia and dyspraxia.	Nessy- dyslexia support Targeted number Targeted phonics Guided writing Guided reading Targeted memory Visual perception	SEN ASAP EP
Social Emotional and Mental Health	Becoming withdrawn or isolated. Challenging, disruptive or disturbing behaviours. Attention deficit hyperactive disorder (ADHD) Attachment disorder	Nurture sessions with OPAL (Outdoor playing and learning) Counselling Anger management Pupil voice Social and emotional interaction Mindfulness	EP CYPS Community Paediatrics (CP) Occupational Therapy (OT) SEN ASAP
Sensory and or Physical	Hearing impairment (HI) Visual impairment (VI)	Motor skills – gross and fine	SEN ASAP OT

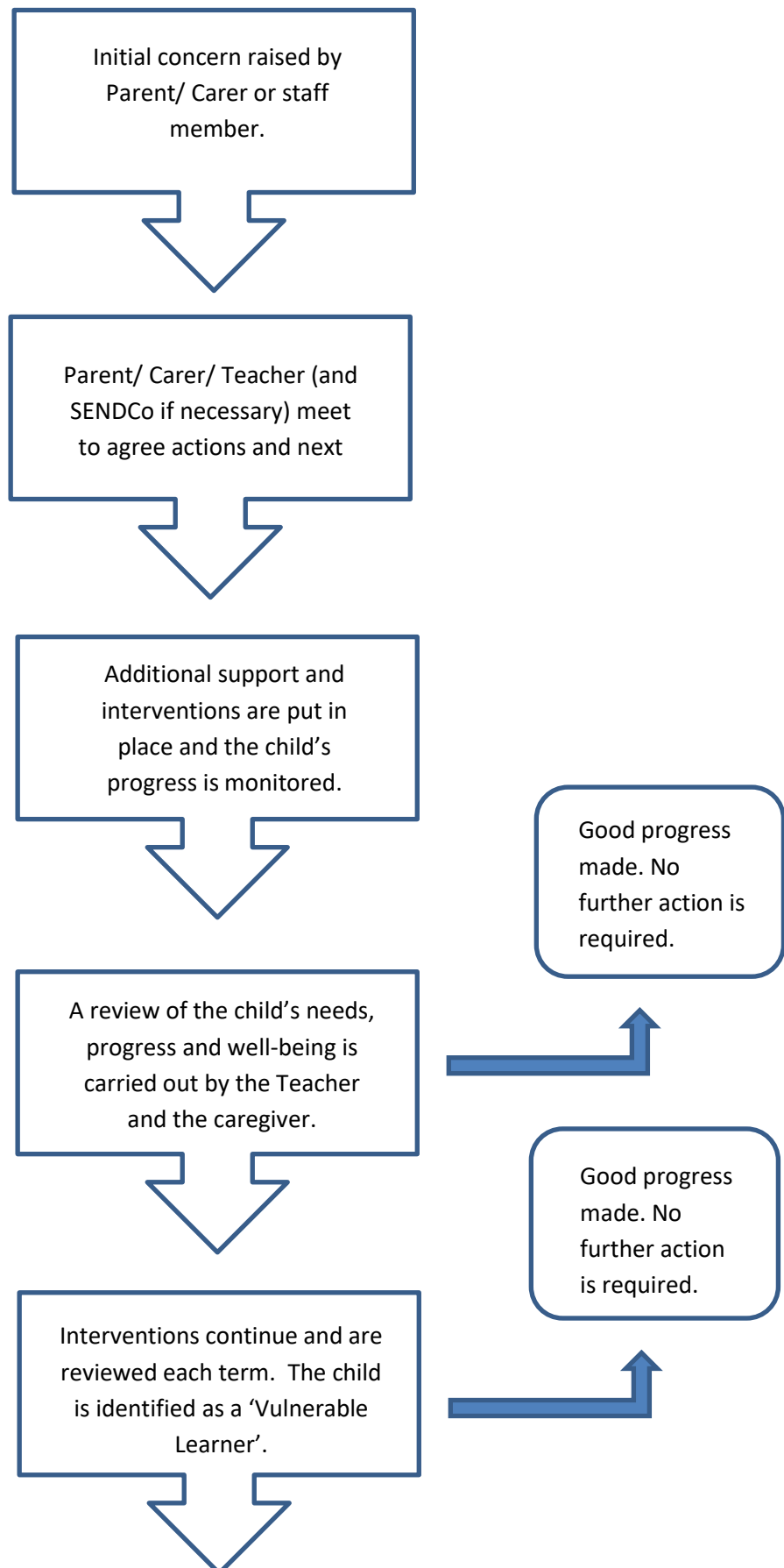
	Multi-sensory impairment (MSI) Physical disability (PD)	Write from the start programme Visual perception	Community Paediatrics (CP) GP School Health
--	--	---	---

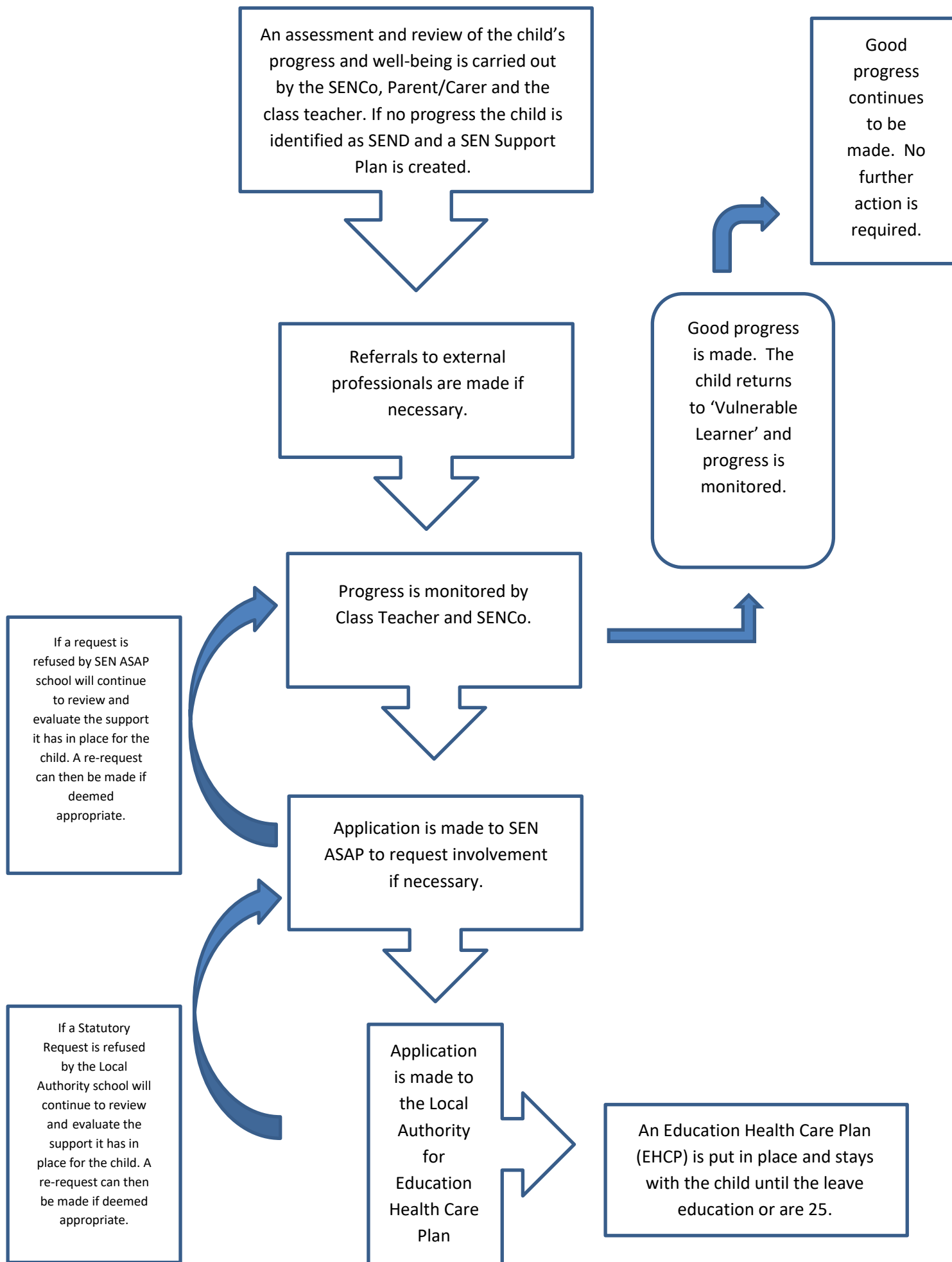
Many outside agencies can provide programmes that a child can follow in school with the support of the SEND team.

Teaching Assistants work alongside class teachers to support the children with their learning in all areas of the curriculum. Class Teachers and Teaching Assistants provide additional support for children in all areas of learning by delivering discrete small group sessions when required. All of our teachers are trained to support children with additional needs and are guided by a child's SEN Support Plan as to what support a child requires to access learning successfully within the mainstream classroom.

A child may access one or more interventions depending on what they need at any stage during their time in our school. At West Walker we believe early intervention is vital if a child is to make progress and enjoy their time in our school. The chart below shows the SEND pathway followed in West Walker.

'Vulnerable Learner' and SEND identification pathway at West Walker





Useful information and contacts

Mrs M Scorgie (SENDCo) m.scorgie@neatat.org.uk

Mr R Allon (Head Teacher) r.allon@neatat.org.uk

Mr S Gittins (Executive Head) s.gittins@neatat.org.uk

SEND Local offer

Here you can find all of the information, advice and support that families of children and young people with Special Educational Needs or Disabilities (SEND) might need to use

<https://www.newcastlesupportdirectory.org.uk/send-local-offer>

Family Advice and Support Team

Family Advice and Support team (FAS) work with parents and carers of disabled children and young people up to the age of 25 years to provide co-ordinated support.

Family Advice Workers: 0191 2818737

<https://skillsforpeople.org.uk/support/family-advice/>

Email: information@skillsforpeople.org.uk

Newcastle Special Educational Needs and Disabilities Information, Advice and Support Service (SENDIASS)

Newcastle SEND IASS provides information, advice and support at any stage of a child or young person's education.

0191 2116255

Email: sendiassadmin@newcastle.gov.uk

National Autistic Society

<https://www.autism.org.uk/what-we-do/education-and-children-services>

The Complaints Procedure:

Initially an attempt will be made to resolve a complaint about SEND provision at school level within one week of the complaint having first been made. The procedure is firstly that the class teacher attempts to resolve matters, then if required the SENCO and /or Head Teacher becomes involved.

If the complaint is unresolved, then the person making the complaint is advised of their rights under Section 23 of the Education reform Act to make a complaint. The Governing Body will consider the complaint, after which, if necessary the NEAT Trust Board will become involved. School will inform parents/carers of the local authority's commissioned independent disagreement resolution service.

(Updated by M Scorgie 2025 and is due to be reviewed in July 2026)